

Webinar: Public Water Museums

28 07 2021
Hilde De Laet
Manager of Hidrodoe

Hidrodoe
een wereld van water
pidpa

Congratulations!



*¡Muchas
Felicidades!*

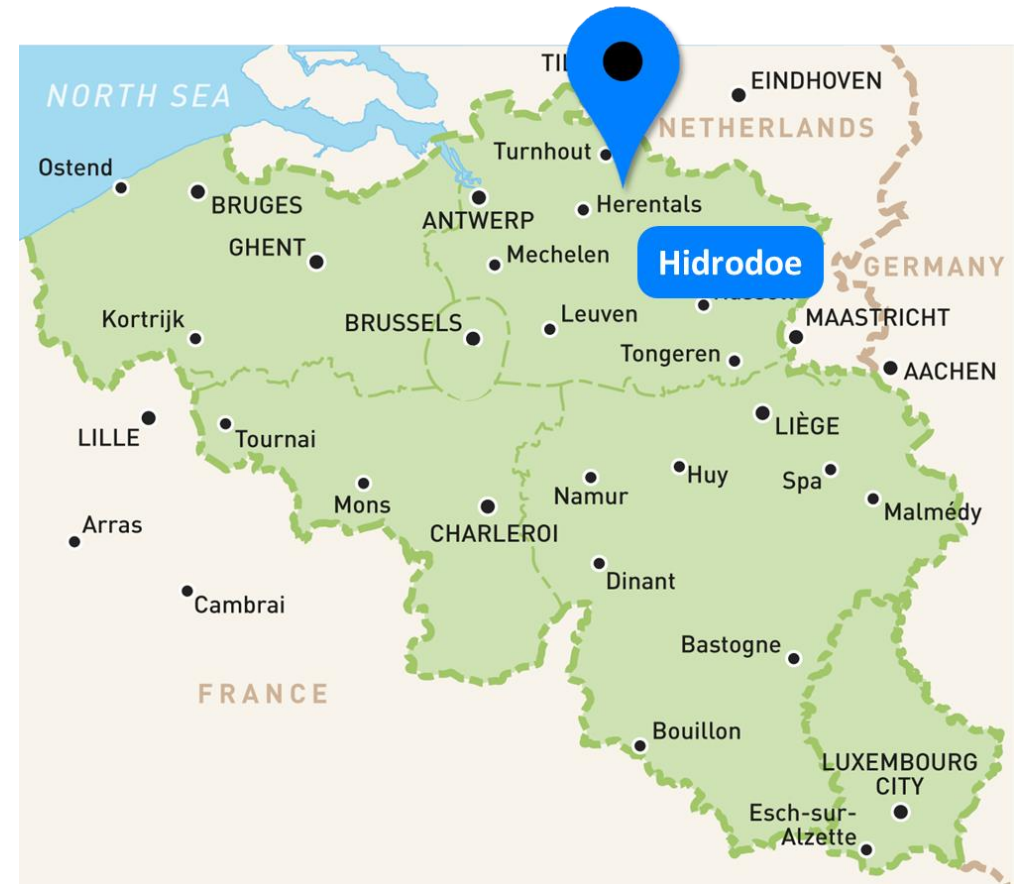
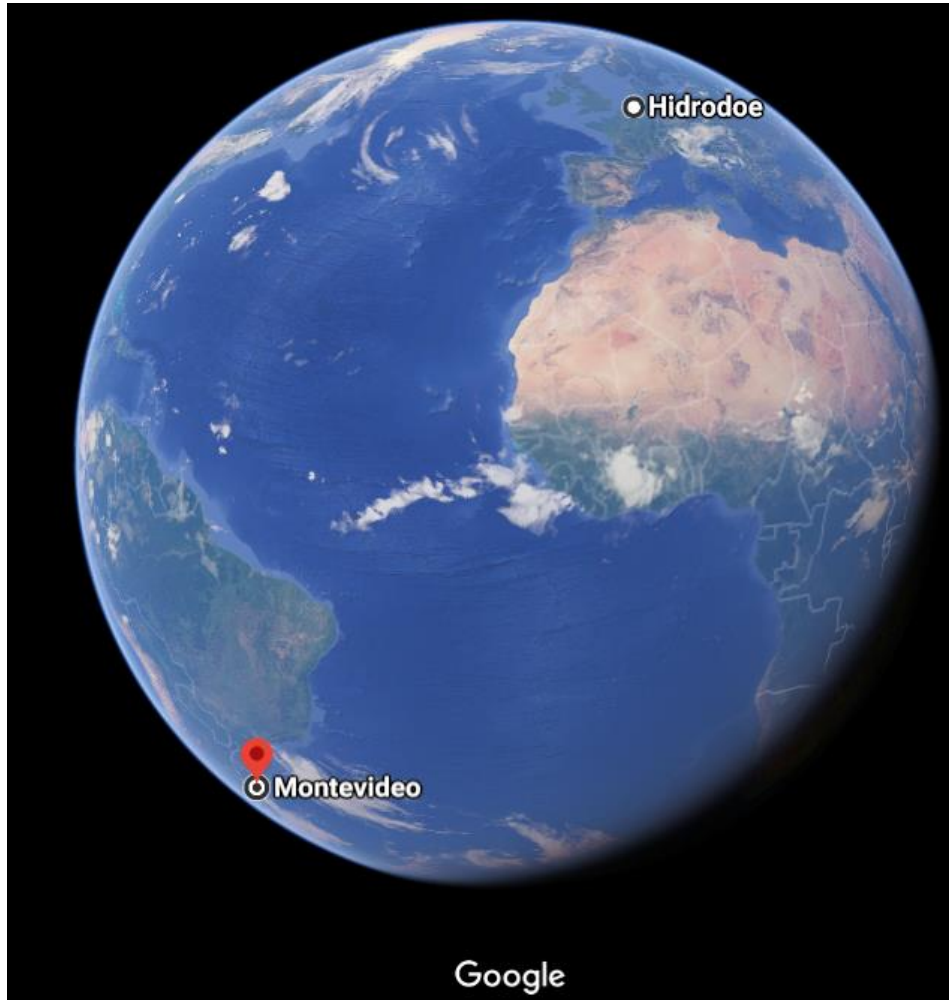


150

AÑOS

DEL ABASTECIMIENTO DE LAS AGUAS CORRIENTES
A MONTEVIDEO

Where is Hidrodoe located?



What is Hidrodoe?

next to one of our water production plants



What is Hidrodoo?

an interactive experience center about water



What is Hidrodoe?

- Hidrodoe: 'Hidro'= water 'doe'= to do
- + 120 hands-on experiments
- 4-D movie
- project of & operated by Pidpa = flemish water company
- opening: 22 March 2003



What is Hidrodoe?

4 areas of exhibition:

1. Waterworld
2. Water Maker - 4D movie
3. Blue Water Garden
4. Green Garden

2 commercial areas:

café

shop



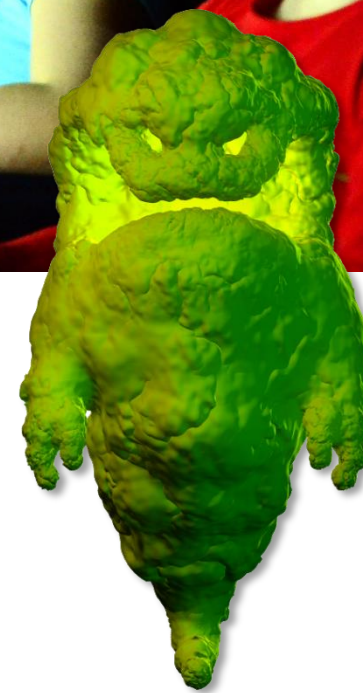
Waterworld



Waterworld



Water maker – 4D movie



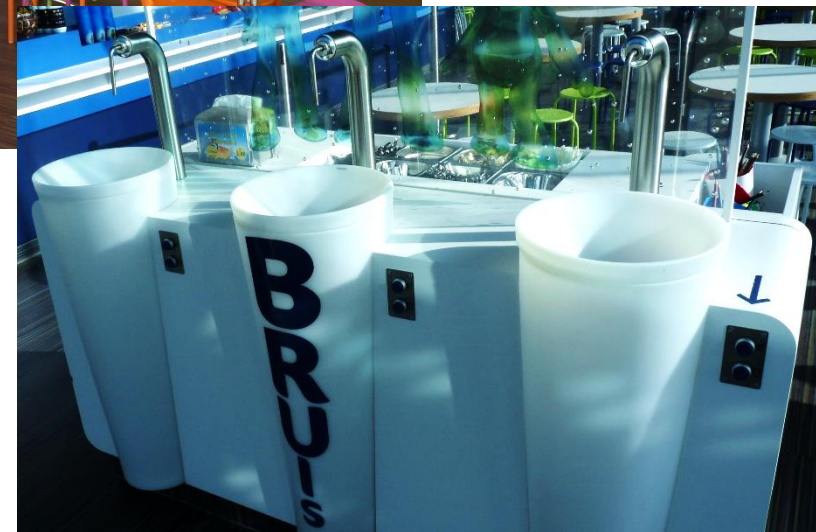
Blue Water Garden



Green Garden



Water cafe & shop



Our offer

- Workshops and science shows
- Treasure hunts
- Birthday parties
- Temporary exhibitions
- Water walks
- Investigating aquatic insects



Facts & figures

Open 5 days out of 7 -> 9:30 a.m. to 5 p.m.
Closed every Wednesday and Saturday.
July and August = 7/7

Employees:

- 11 fte low season
- 15 fte high season



Facts & figures



Admission:

Individual ticket

adults = € 8,50

kids, seniors and people with disabilities = € 6,50

teachers = free

Group ticket

adults = € 7,50

seniors and people with disabilities = € 5,50

kids and schools = € 5,00

teachers = free



Facts & figures

Visitor number: 55.000 – 60.000/year

50%

walk-ups

50%

groups

Year budget: ± € 600.000

Financial resources = Pidpa

Our mission & vision

Mission

Convey the value of water and promote drinking tap water in an educational, unique, sustainable and hospitable way.

Vision

At Hidrodoe we ensure extreme hospitality and a top experience in all areas, always inspired by water.

By bringing quality education and fun. Easy accessible to everyone.

We make sure our place is a thriving destination for nature and people.

Our visitors and water are our top priority and source of inspiration.

Our values

educational

unique

sustainable

welcoming



Certificates - labels - awards



pros & cons

Being a public water museum

Pro:

- call on all services of Pidpa: accounting, HR, technicians, communication, ...
- a lot of water knowledge in-house
- our mission is priority <-> making money/commercial goal
- municipalities are our partners (intermunicipal company)

Cons:

- bound by public procurement legislation
- money comes from residents' water bill = public opinion

our neighbours



Communities/society

- City of Herentals and Sport Flanders -> wheelchair path
- Province of Antwerp
- school nearby & University Ghent -> butterfly project
- neighbouring municipalities -> STEM academies
- Oxfam Herentals
- Join for water



SDGs



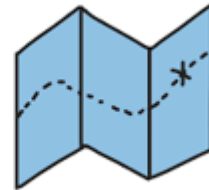
SDG-FORUM
BELGIUM



SDGs



IEDEREEN
VERDIENT
VAKANTIE



Tourism for
Autism



zeg gewoon **NEE**
tegen plastic rietjes!



Help or
in 2



SAY NO
SINGLE USE PLASTIC



feel free to contact me

Hilde De Laet

hilde.delamet@pidpa.be

+32/14 44 26 49

